

Taste And Obesity

ebook.ecog-obesity.eu/chapter-nutrition-food-choices-eating-behavior/taste-obesity



Claude Marcel Hladik

Emeritus Research Director at the CNRS (Centre National de la Recherche Scientifique, France)
UMR 7206 Eco-Anthropologie et Ethnobiologie
Muséum National d'Histoire Naturelle, 4 avenue du Petit Château. F 91800 Brunoy
cmhladik@mnhn.fr

Emmanuel Cohen

Postdoctoral Research Fellow
UMI 3189 "Environnement, Santé, Sociétés"
Faculté de médecine, secteur nord, 51 bd Pierre Dramard. F 13344 Marseille cedex 15
kocomanou@gmail.com

Patrick Pasquet

Research Director at the CNRS (Centre National de la Recherche Scientifique, France)
UMR 7206 Eco-Anthropologie et Ethnobiologie CP 135
Muséum National d'Histoire Naturelle, 57 rue Cuvier. F 75231 Paris Cedex 05
ppasquet@mnhn.fr

Understanding the links between taste perception and obesity would help authorities cope with obesity, which diminishes the health of human populations. This has been highlighted by a study of the impact of programs intended to educate obese adolescents about healthy diets (Pasquet *et al.*, 2007)¹. We present and discuss the results of this study in this chapter.

In order to analyze the relationships between taste perceptions and obesity, we will (I) present the main aspects of taste perception: psychophysical (mostly nerve impulses) and psychocultural dimensions, (II) specifically describe responses to sugars and fats, (III) explore the ethnic variability of taste responses, (IV) assess psychocultural dimensions of taste perception which would promote a loss of weight, and (V) show how psychophysical taste perceptions could interfere with the weight loss program throughout the psychocultural dimension.

Psychophysical and psychocultural dimensions of taste perception

The psychophysical dimension of taste perception has been studied in several human populations, using the method of measuring recognition thresholds proposed by Simmen, Pasquet & Hladik, (2004)² for solutions of sugars, salts, and various natural and pure synthesized compounds. These types of taste thresholds have individual characteristics which, like color vision, vary little, if at all, either with age or the degree of satiety, as shown by Pasquet *et al.*, (2006)³. They appear genetically determined, varying among different individuals and populations (Hladik and Pasquet, 1999)⁴.

The differing resemblances among 412 individuals in taste recognition thresholds for various substances is expressed as an additive tree (Figure 1) showing the distance between the thresholds for different substances based on the correlations among them. For instance, most people who are able to detect sucrose at low concentration are also able to detect fructose at low concentration, whereas detection thresholds for citric acid or tannin are not significantly correlated with that of sugars. Similarly, detection thresholds for quinine is correlated with that of tannins, but not at all with that of sugars, and is partly linked to that of sodium chloride (Hladik *et al.*, 2003)⁵.

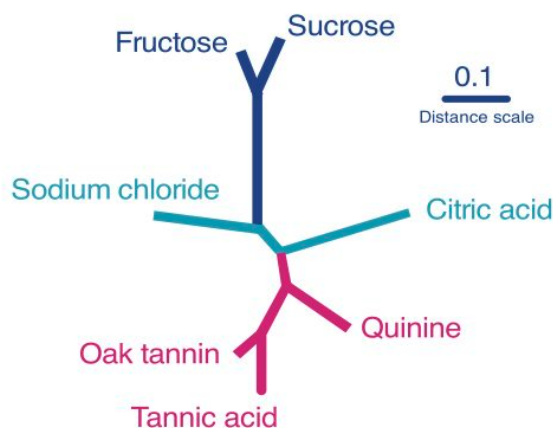


Figure 1. Additive tree showing the relationships between taste recognition thresholds for various compounds, constructed according to the pairwise Pearson correlation matrix calculated for the taste thresholds of 412 human adults

These correlations reflect similarities and differences of initial signals in the taste nerve fibers arising from the taste buds of our tongue. Such a psychophysical dimension of taste perception has been explored in detail by the research team of Göran Hellekant at Wisconsin University (Hellekant and Danilova, 2004; Danilova and Hellekant, 2004)^{6,7}. By recording directly the pulses on isolated fibers of the chorda tympani (the major taste nerve) of non human primates, the authors observed various responses according to various solutions used as stimuli and applied on the tongue (Figure 2). Each fiber generally responds to several stimuli, although some of them can be grouped as best responding to sugars or to bitter substances.

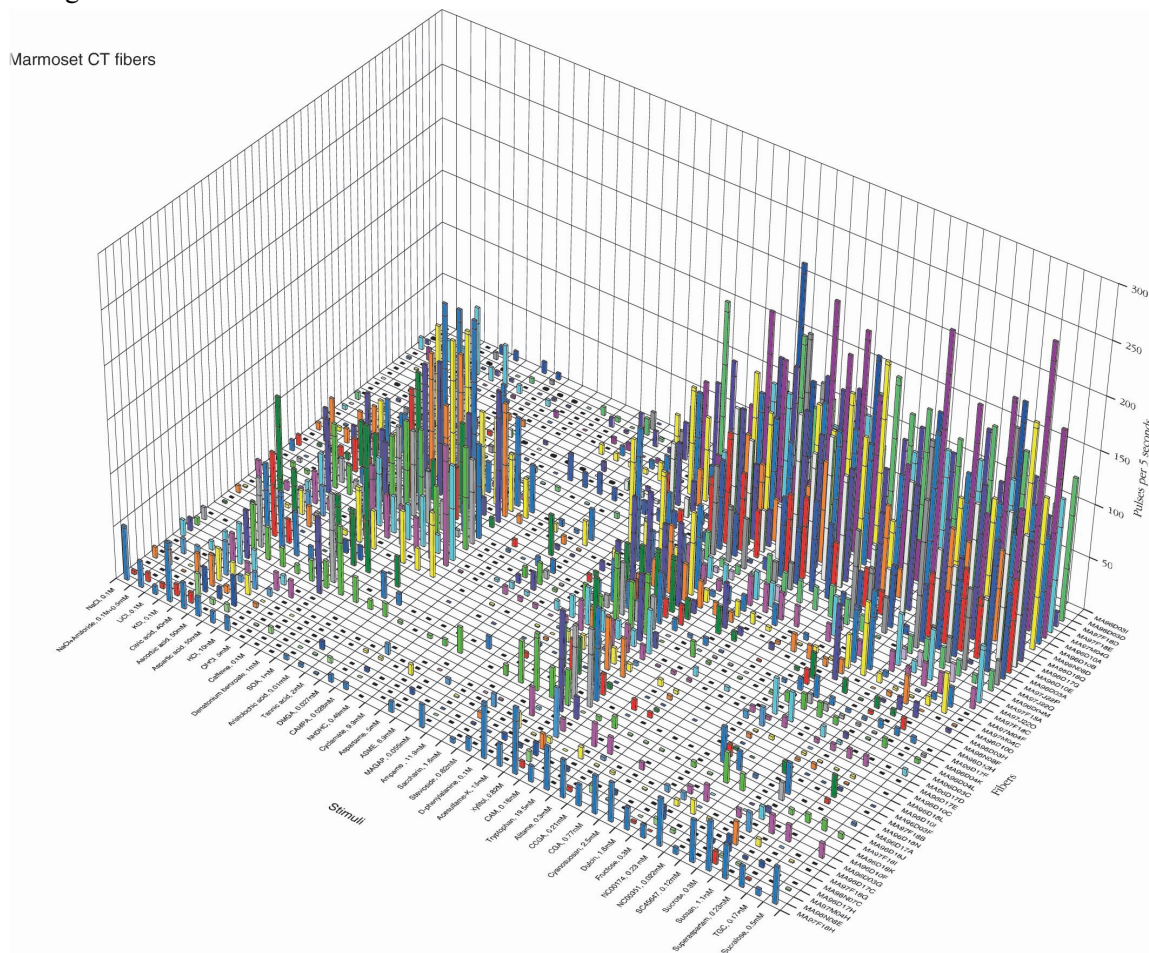


Figure 2. An overview of the responses of 49 chorda tympani taste fibers of the marmoset. The height of the column represents impulse frequency over the first 5 sec of stimulation. Absence of a mark shows that data are missing. The stimuli were arranged along the X axis in order of salt, sour, bitter and sweet. The fibers were arranged along the Y axis in groups: citric acid, quinine and sucrose best responding fibers (after Hellekant and Danilova, 2004)⁶.

Interestingly, the study of taste recognition thresholds allowed the identification of some fiber categories that contribute differently to transmitting pulses triggered by stimuli of various compounds. These pulses progress along the taste nerve, and are relayed in the nucleus of the solitary tract and the thalamus, as Rolls (2004)⁸ showed in a reconstructed schema (Figure 3) based on experiments on non-human primates.

The similarities and differences between responses of taste nerve fibers to various compounds, allowed the inference of trees for several non human primate species. The shapes of such trees are very similar to that of the tree expressing taste recognition correlations in humans. The example shown on Figure 2 for a limited number of taste nerve fibers shows that some categories of nerve fiber best respond to particular types of compounds (sugars, quinine, salts, acids...). However, most of the fibers may also respond to several other substances, hence the correlations comparable to those shown in Figure 1 for human recognition thresholds (Hladik *et al.*, 2003)⁵.

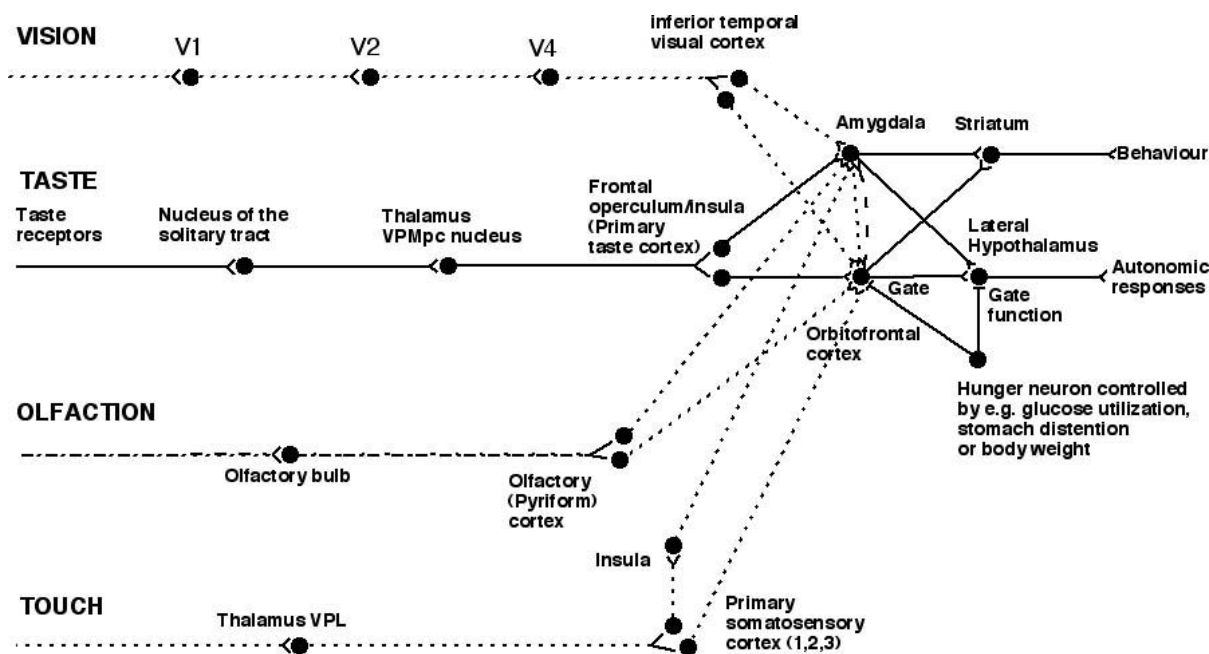


Figure 3. Schematic diagram of the taste and olfactory pathways in primates showing how they converge with each other and with visual pathways. The gate functions shown refer to the finding that the responses of taste neurons in the orbitofrontal cortex and the lateral hypothalamus are modulated by hunger. VPMpc - ventralposteromedial thalamic nucleus; V1, V2, V4 - visual cortical areas (after Rolls, 2004) [8].

In this schematic diagram (Figure 3), Rolls highlighted the convergence of pathways of sensory information (as pulses in nerve fibers), of taste, olfaction, touch and vision, toward the orbitofrontal cortex, where other types of fibers also converge. The association between responses to the four senses (e.g. color of a fruit + its odor + flesh texture feeling + sugary and acid taste recognition), that determines what is commonly called «taste», was clearly understood by Rolls⁸ in terms of the various pathways inside the brain. The novel approach of Wedeen et al. (2012)⁹, using diffusion magnetic resonance imaging, provides impressive images of the connective fibers inside the primate brain (including humans and non-human primates) and allows one to observe details of pathways. This approach complements the results obtained by Rolls for non-human primates, validating them for humans.

Other important fibers shown in Figure 3 also converge on the orbitofrontal cortex. These nerve fibers convey information about hunger and satiety (glycemia responses), as well as information from other areas of the brain implying unconscious and conscious perceptions of food such as liking and disliking. Accordingly, the convergence of all these nerve fibers in a unique area of the brain explains

last type of perception (the hedonistic dimension), depends on cultural and psychological factors and are generally measured in terms of psychocultural responses.

Perceptions of fat and sugars

Nevertheless, mechanisms and pathways of stimuli from the tongue to the orbitofrontal cortex involved in perceiving fat differ from those perceiving sugars and other soluble compounds. Rolls et al. (1999)¹⁰ found a population of neurons in the orbitofrontal cortex of primates that responds when fat is in the mouth. However, the responses to fat involve the sense of touch in the mouth more than stimulation through the chorda tympani, the proper taste nerve from the tongue. Indeed, the fat-related responses of these neurons are produced at least in part by the texture of the food (sense of touch) rather than by chemical receptors sensitive to certain fatty chemical compounds (sense of taste). In addition, the texture channel, through which these fat sensitive neurons are activated, is separated from the viscosity sensitive channel (Verhagen et al., 2003)¹¹, which jointly determine neuronal responses for fats (Figure 4).

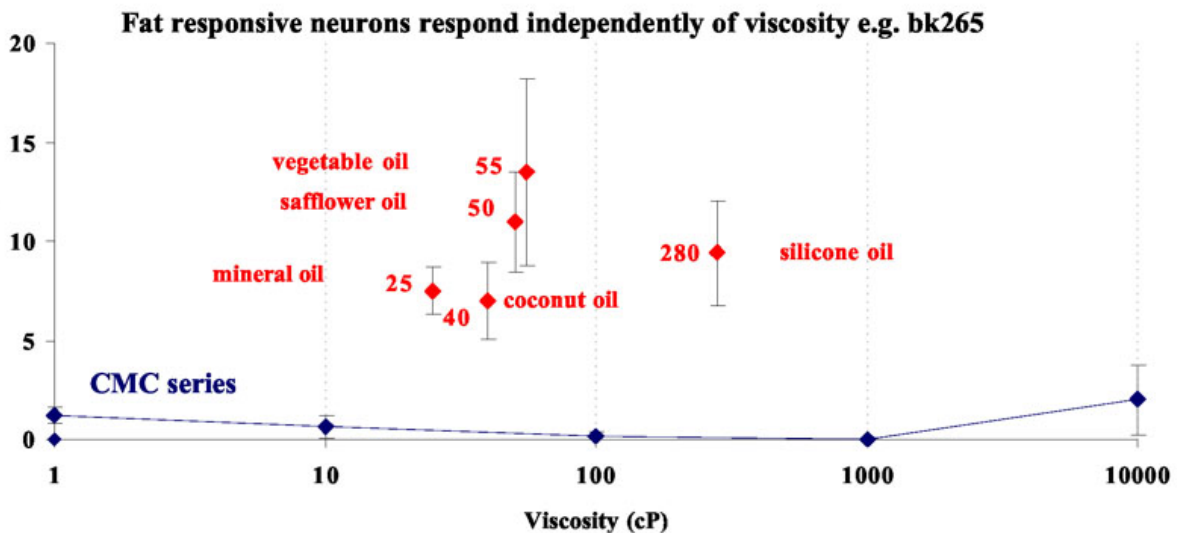


Figure 4. Responses of a neuron of the primate orbitofrontal cortex to the texture of fats in the mouth, independently of the viscosity. The cell (bk265) increased its firing rate to a range of fats and oils (the viscosity of which is shown in centipoises). The information that reaches this type of neuron is independent of a viscosity sensing channel. The neuron responded to the texture rather than the chemical structure of the fat in that it also responded to silicone oil ($\text{Si}(\text{CH}_3)_2\text{O})_n$) and paraffin (mineral) oil (hydrocarbon). Some of these neurons have taste inputs (after Rolls, Verhagen and Kadohisa, 2003)¹².

Perceptions related to fats or sugars are provoked by compounds that provide high energetic input. The abundance of these compounds in tropical forest fruit reflects the co-evolution of primates with angiosperms during the Cenozoic (Hladik et al., 2003)¹³. Plants provide high energy food for primates through their fruit's richness in sugars (and sometimes fat), and primates disperse seeds far enough to favor the reproduction of such plants. Thus, plants providing the sweetest fruits disperse their seeds most effectively, and primates with the best perception, and so recognition, of fats and sugars obtain the most energy. This coevolution between primates and the fruit they eat leads to a genetically

gusto-facial reflex identified by Steiner et al. (2001)¹⁴.

The ability of primates to taste sugars and fats, their preference for them, and their aversion for bitter compounds, is shared by human beings. However, in today's world, with easier accessibility to energy-rich food in industrialized regions, this psychophysical trait can lead to obesity in humans (Pasquet et al., 2011)¹⁵. Moreover, the propensity for fats and sugars may have a psychocultural component (Cohen et al., 2013)¹⁶. For example, do obese persons have the greatest craving for fats and sugars? Craving can be considered a psychocultural response, even though the sensory responses (mostly involving the taste nerve) could remain a determining factor that can be studied through the ethnic variability responses of taste perception.

Ethnic variability, taste perceptions and obesity

Studies conducted in populations of developing countries, in regions where access to food has been difficult, document different perceptions, knowledge and practices that promote fatty diet and value plumpness and stoutness (Brown and Konner, 1987)¹⁷. For example, in the Serere and Wolof districts of Senegal, populations originally presenting low Body Mass Index levels (Maire et al., 1992)¹⁸, developed culinary practices promoting consumption of peanut oil, fatty meat, and sweet drinks (De Garine, 1962; Cohen et al., 2012)^{19,20}, symbols of urban lifestyle.

Similarly, the Bamileke of Western Cameroon, historically recognized as a wealthy ethnic group even after their migration towards the town, have now supplemented their traditional caloric dishes, which contain much palm oil, with foods containing large amounts of sugar and fat (e.g. seven lumps of sugar in a cup of coffee, extremely fatty doughnuts) emphasizing their wealthy status to surrounding peoples (Cohen et al., 2013)¹⁶. Even after migrating to industrialized western countries, people from these areas that live in poor neighborhoods of large cities, maintain these food habits (Wluczka and Debska, 2006; Kulkarni, 2004)^{21,22} although other foods are much more accessible. Other richer, better educated, people living in the centers of these cities adopt a far healthier diet (Sobal and Stunkard, 1989)²³.

These psychocultural preferences, adaptive where shortages are frequent, can coexist with genetically determined adaptive preferences such as high taste sensitivity to energy-rich compounds. However, taste recognition thresholds of populations living in various environments throughout the world (Figure 5) differ significantly from each other, even though those differences are less pronounced than the large variation among individuals.

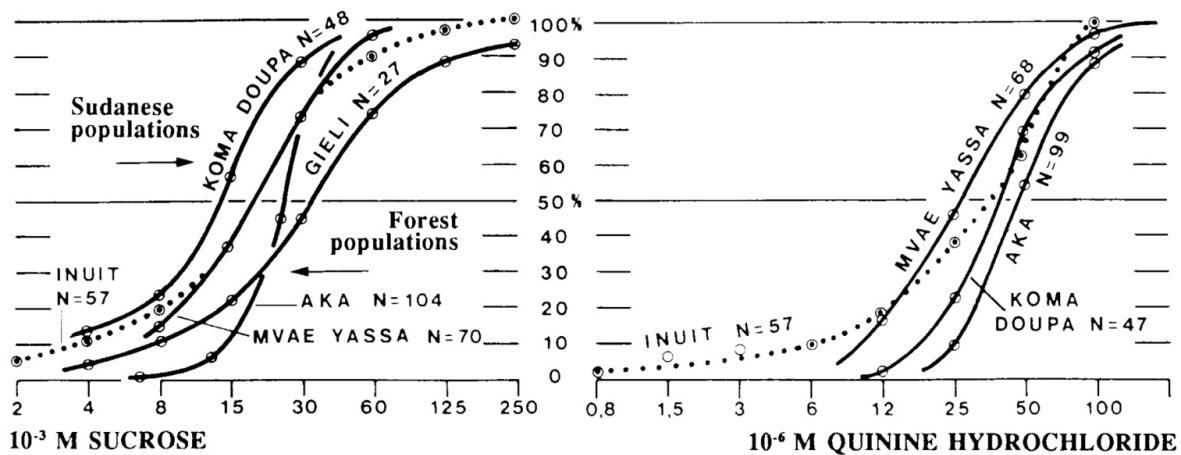


Figure 5. The curves show, for different populations, cumulative percentages of people able to discriminate the sweet taste of sucrose (left graph) and the bitter taste of quinine hydrochloride (right graph). Dilutions are indicated along the horizontal axis, respectively in millimoles ($10^{-3} M$) and in micromoles ($10^{-6} M$). Note that forest populations, especially Kola Pygmies (Gieli) have a lower sensitivity to sucrose than populations living in the Sudanese environment of northern Cameroon (Koma and Doupa). In contrast, the differences involving bitter substances are not significant (source: Hladik et al., 1990)²⁴.

In these populations, the small but significant differences in perception of sucrose is explained by historical differences in their environments. In sudanese settings, the low biodiversity of plants entails a low sugar content in fruits, so Mvae and Yassa taste sugar content more accurately; whereas, in tropical forests, the biodiversity of fruits is far higher, so Aka Pygmies do not need to assess sugar content so accurately: during the Cenozoic, selective pressure for accurately recognizing sugars in fruits was presumably lower. In contrast, the selective pressure to avoid toxic bitter compounds such as quinine led to similarly accurate recognition thresholds for low concentrations of these compounds in different human populations.

Globally, the large variability of taste recognition thresholds in human beings does not imply significant inter-ethnic diversity of major genetic adaptations in food preferences, since this variability is mostly driven by various psychocultural factors.

Psychocultural dimensions of taste in relation to obesity

The measurement of taste perception in terms of hedonistic value (preferences and aversions) is based on tests which are a necessary complement of the evaluation of the psychosensory taste thresholds (shown above). Using similarly diluted solutions of various substances, such measurements of taste preferences and aversions, described in detail by Simmen, Pasquet and Hladik (2004)² can be made, either with solutions or with solid foods that are actually tasted, or by showing the picture of various foods and recording responses on a scale graduated from «the most delicious ever eaten» to «the worst ever tasted».

To complete the assessment of the psychocultural dimension, a major investigation of neophobia (the

assessing neophobia was developed by Pliner (1994)²⁵. This scale, called the Food Neophobia Scale (FNS), was translated into French by Rigal *et al.* (2006)²⁶ to obtain individual measurements of neophobia at the beginning and the end of nine-month educational sessions encouraging weight loss in massively obese adolescents. Each subject filled this 13 items/4 points (agree a lot, agree, disagree, disagree a lot, rated respectively from 1 to 4) scale questionnaire at the session's beginning and end. Individual FNS scores were calculated as a mean rating of the 13 questions arranged in terms of neophobia responses. In fact, neophobia is considered as a factor involved in disliking fruit and vegetables, which limits food choices largely to fast food types of carbohydrates, often leading to obesity (Monneuse *et al.*, 2004)²⁷. Accordingly, the aim of the educational part of the weight loss session was to lead participants to reduce their neophobia levels in order to change their food habits.

In fact, food neophobia is one aspect of a general tendency to hyper-sensitivity, that also includes other psychocultural dimensions such as the extreme responses to sounds. In addition, this hyper-sensitivity of neophobic persons is correlated to a general hyper-sensitivity in taste perceptions (Monneuse *et al.*, 2004)²⁷, especially for PTC and PROP: phenylthiocarbamide and propylthiouracyl (the artificial chemicals for which a genetically determined sensitivity has been studied since the first discovery of Fox in 1931). Accordingly, the sensitivity to PTC and PROP can be used as indices of neophobia, as Sung Eun Choi (2014)²⁸ recently did. However, besides this genetic influence, knowledge of and education about foods also affect variation in neophobic responses.

Accordingly, the educational program of weight loss focused on acquiring a higher degree of acceptance of new foods, especially fruit and vegetables. The positive results obtained during the session (Monneuse *et al.* 2008)²⁹, with many obese adolescents partly or totally overcoming their obesity, depended on this focus.

Taste sensitivity and the weight loss program

Taste sensitivity, recognition taste thresholds — of solutions of fructose, sucrose, citric acid, sodium chloride, and PROP — was measured at the beginning of the weight loss session (Pasquet *et al.*, 2008)¹ in order to investigate relationships between those characteristics and possible changes of neophobia, which could accompany weight loss.

Among the adolescents in this weight loss program, we observed different levels of taste sensitivity reflecting the proportions generally observed in human populations by Simmen and Hladik (1993)³⁰. Since it has been observed that the high sensitivity to PROP reflects a high, genetically determined, global sensitivity linked to neophobia, it is pertinent to use the various responses to PROP to identify hyper-sensitive subjects, and adapt the weight loss program to their peculiar needs.

In fact, when separating the subjects into three groups according to PROP sensitivity, low, medium and high (Figure 6), we observed that the variation of neophobia (measured by the FNS scale) during the weight reduction session was significant for tasters of low and medium concentrations, whereas there was no significant variation for third group that could perceive the lowest levels of PROP (high PROP perception).

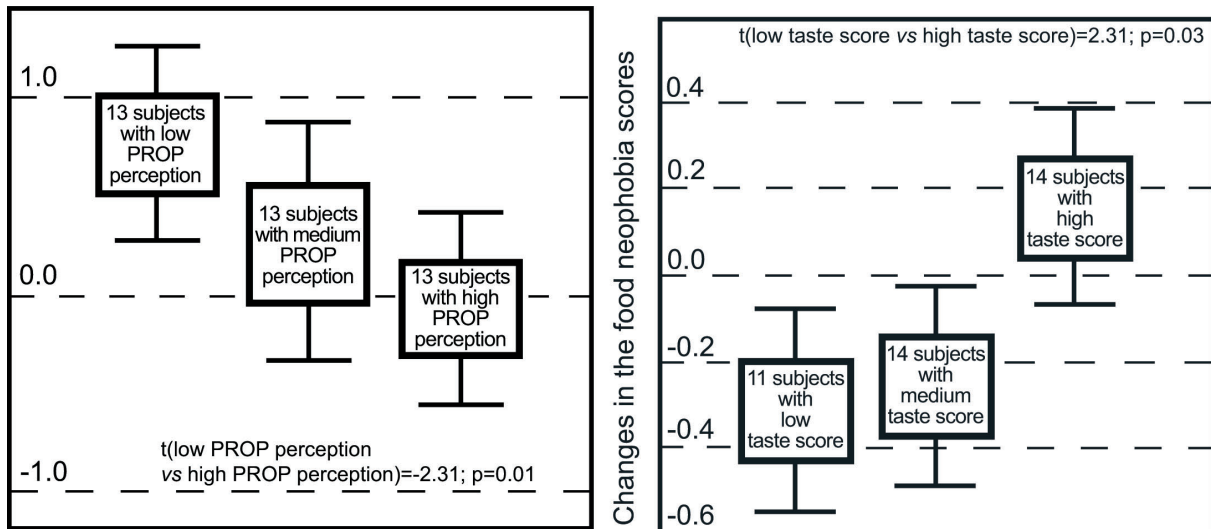


Figure 6. At the end of a nine months session of weight reduction, when grouping the subjects according to taste sensitivity, a significant difference was found in the variation of taste neophobia. A similar discrepancy appears either considering sensitivity to PROP (left graph) or according to a taste score (calculated from sensitivity to sugar, salt, and citric acid), with an absence of variation among the most sensitive subjects (after Monneuse et al., 2008)²⁹.

In addition, when grouping the subjects according to other taste recognition thresholds (for sugars, citric acid and sodium chloride), a similar significant correlation with the variation of neophobia was observed (Figure 6). Since variation in neophobia during the weight loss session was significantly correlated to actual weight loss, we can conclude that subjects with a high taste sensitivity cannot easily overcome their neophobia or lose weight.

Finally, variation in neophobia level might depend largely on the psychocultural dimension of taste perception. However, the convergence of several signals (Figure 3) determining taste perception implies that the psychocultural dimension is not independent of the psychophysical dimension. Accordingly, a weight loss session must be adapted to take into consideration the subjects with the higher genetically determined taste sensitivity. Considering the present trend for reducing sugar in most food products, following the new guidelines of the WHO, which is discussed in the press (i.e. Sifferlin, 2014)³¹, introducing information about added sugar on food containers, would improve the psychocultural perceived dimension of foods, and thus contribute to lower the risks of obesity, even for the most vulnerable subjects with genetically determined extreme taste sensitivity.

References

1. Pasquet P, Frelut ML, Simmen B, Hladik CM, Monneuse M-O. Taste perception in massively obese and in non-obese adolescents. *Int J Pediatr Obes* 2007;2(4):242–8.
2. Simmen B, Pasquet P, Hladik CM. Methods for assessing taste abilities and hedonic responses in human and non-human primates. In Macbeth H, MacClancy J, eds. *Researching Food Habits: Methods and Problems*. Oxford, England: Berghahn Books, 2004:87–99.
3. Pasquet P, Monneuse M-O, Simmen B, Marez A, Hladik CM. Relationship between taste thresholds and hunger under debate. *Appetite* 2006;46(1):63–6.
4. Hladik CM, Pasquet P. Évolution des comportements alimentaires: adaptations morphologiques et sensorielles. *BMSAP* 1999;11:307–32.
5. Hladik CM, Pasquet P, Danilova V, Hellekant G. The evolution of taste perception: psychophysics and taste nerves tell the same story in human and non-human primates. *Comptes Rendus Palevol* 2003;2(4):281–7.
6. Hellekant G, Danilova V. Coding of sweet and bitter taste: lessons from the common marmoset, *Callithrix jacchus jacchus*. *Primatologie*; 2004:47-85.
7. Danilova V, Hellekant G. Sense of taste in a New World monkey, the common marmoset. II. Link between behavior and nerve activity. *J Neurophysiol* 2004;92(2):1067–76.
8. Rolls ET. The functions of the orbitofrontal cortex. *Brain Cogn* 2004;55(1):11–29.
9. Wedeen VJ, Rosene DL, Wang R, et al. The geometric structure of the brain fiber pathways. *Science* 2012;335(6076):1628–34.
10. Rolls ET, Critchley HD, Browning AS, Hernadi I, Lenard L. Responses to the sensory properties of fat of neurons in the primate orbitofrontal cortex. *J Neurosci* 1999;19(4):1532–40.
11. Verhagen JV, Rolls ET, Kadohisa M. Neurons in the primate orbitofrontal cortex respond to fat texture independently of viscosity. *J Neurophysiol* 2003;90(3):1514–25.
12. Rolls ET, Verhagen JV, Kadohisa M. Representations of the texture of food in the primate orbitofrontal cortex: neurons responding to viscosity, grittiness, and capsaicin. *J Neurophysiol* 2003;90(6):3711–24.
13. Hladik CM, Simmen B, Pasquet P. Primatological and anthropological aspects of taste perception and the evolutionary interpretation of 'basic tastes'. *Anthropol Brno* 2003;41:9–16.
14. Steiner JE, Glaser D, Hawilo ME, Berridge KC. Comparative expression of hedonic impact: affective reactions to taste by human infants and other primates. *Neurosci Biobehav Rev* 2001;25(1):53–74.

15. Pasquet P, Hladik CM, Tarnaud L. Évolution des perceptions gustatives. *Biofutur* 2011;(320):38–42.
16. Cohen E, Boetsch G, Palstra FP, Pasquet P. Social valorisation of stoutness as a determinant of obesity in the context of nutritional transition in Cameroon: The Bamiléké case. *Soc Sci Med* 2013;96:24–32.
17. Brown PJ, Konner M. An anthropological perspective on obesity. *Ann N Y Acad Sci* 1987;499(1):29–46.
18. Maire B, Delpeuch F, Cornu A, et al. Urbanisation et transition nutritionnelle en Afrique subsaharienne: les exemples du Congo et du Sénégal. *Rev Epidemiol Santé Publique* 1992;40(4):252–8.
19. De Garine I. Usages alimentaires dans la région de Khombole (Sénégal). *Cah étud afr* 1962;3(10):218–65.
20. Cohen E, Ndao A, Gueye L, Boëtsch G, Pasquet P, Chapuis-Lucciani N. La construction sociale du corps chez les sénégalais dans un contexte de transition des modes de vie. *Antropo* 2012;27:81–6.
21. Wluczka M, Debska E. La santé des primo-migrants en 2006 [Internet]. ANAEM; 2006 [cited 2014 Mar 23]. Available from: http://fulltext.bdsp.ehesp.fr/Organismes/ANAEM/Publications/2007/Sante_primo-migrants_2006.pdf
22. Kulkarni KD. Food, culture, and diabetes in the United States. *Clin Diabetes* 2004;22(4):190–2.
23. Sobal J, Stunkard AJ. Socioeconomic status and obesity: a review of the literature. *Psychol Bull* 1989;105(2):260.
24. Hladik CM, Bahuchet S, De Garine I. Food and nutrition in the African rain forest. Paris, France: Unesco, 1990.
25. Pliner P. Development of measures of food neophobia in children. *Appetite* 1994;23(2):147–63.
26. Rigal N, Frelut M-L, Monneuse M-O, Hladik C-M, Simmen B, Pasquet P. Food neophobia in the context of a varied diet induced by a weight reduction program in massively obese adolescents. *Appetite* 2006;46(2):207–14.
27. Monneuse MO, Rigal N, Frelut ML, et al. Is food neophobia a personality trait? A study during a weight reduction program in adolescents. *Int J Obes Relat Metab Disord* 2004;28:S24.
28. Sung Eun Choi. Racial Differences between African Americans and Asian Americans in the Effect of 6-n-propylthiouracil Ta. *J Acad Nutr Diet* 2014 (in press).
29. Monneuse M-O, Rigal N, Frelut M-L, Hladik C-M, Simmen B, Pasquet P. Taste acuity of obese adolescents and changes in food neophobia and food preferences during a weight reduction session. *Appetite* 2008;50(2):302–7.
30. Simmen B, Hladik CM. Perception gustative et adaptation a l'environnement nutritionnel des primates non-humains et des populations humaines. *BMSAP* 1993;5(3):343–54.

31. Sifferlin A. Sweet sacrifice. New guidelines seek to curb our sugar intake. Are they too harsh? Time 2014;183:12.

~ About the Authors ~

Claude Marcel Hladik



Claude Marcel Hladik (born in Paris in 1936) has, for about 30 years, been conducting field studies on the diet of wild primates — lemurs, monkeys and apes — analysing the composition of available foods in the natural setting of 38 primate species. He has been a research fellow of the Smithsonian Tropical Research Institute, a senior research scientist at the CNRS in France, and, in 1998, was nominated Professor at the Muséum National d'Histoire Naturelle, where his wife, Annette Hladik, is conducting botanical studies on plant species and foods available to primates in tropical forests. In the research results they have published together, they have emphasized the evolutionary importance of tubers of wild yams (*Dioscorea* spp.), because the energy available in the non-toxic and abundant forest yam species is probably the key factor that allowed the development of a large brain in *Homo* species.

Emmanuel Cohen



73 bd Charles de Gaulle
95110 Sannois, France
Cellular Phone: 0033 626690028
Email: emmcohen@outlook.fr

Education

- 2008-2012, Faculty of medicine of Marseille/Co-directed by the MNHN
PhD in health human ecology
- 2006-2007, National Museum of Natural History (MNHN) of Paris
Master 2 research, human ecology in: public health
- 2005-2006, University Lille 1
Master 2 professional, sociology: practices and policies of health

Professional Experience

- Applied Researcher Engineer in production and analysis of health data – CNRS (April-September 2014)
- Scientific Mediator in public health within the association “Les Petits Débrouillards” (2013-2014)
- Design Researcher in production and analysis of health data – CNRS (November 2012-October 2013)
- Project Manager on the “France component” of ANR ANTRAC program of the UMR 7206 (CNRS-MNHN): “The health of Cameroonian migrants in Ile-de-France” (March-June and September 2012)
- Investigator in Cameroon (Yaoundé and West Cameroon) for ANTRAC project (March-April 2009)
- International Volunteer in Administration in Senegal as a researcher in health human ecology in the 3189 UMI (CNRS) (October 2008-October 2010)
- Design Researcher in health human ecology for the CNRS in France (Paris) and Senegal (Dakar) (May-July 2008)
- Investigator in France (Paris) for the EFS (“French Blood Establishment”) (September-October 2007)
- Responsible for expertise in public health for the IRD (Ouagadougou) in a Burkinabe NGO (ABBEF) specializing in sexual and reproductive health of young people (June-September 2006)
- Scientific Mediator in environment and public health for primary and secondary school students in the Museum of Natural History in Marseille (April-June 2005)

Specific skills

- Implementation of qualitative and quantitative surveys in public health
 - Use of common methodological tools (individual and group interviews, questionnaires, biometrics)
 - Production of specific metrics (psychometrics) using qualitative data
 - Integrating qualitative and quantitative data, sociocultural (behavioral norms) and biomedical (anatomical and physiological markers)
- Mastery of analysis software of qualitative (NVivo) and quantitative data (SPSS, Statistica, etc…)
 - Training in General Statistics with R (MNHN, March 2011)
 - Training in Geographic Information Systems with ArcGis (University Aix-Marseille, May 2010)
- Scientific writing of projects funded, articles and book chapters in French and English
- Co-supervision of Master and PhD students in biomedical and humanities sciences (UCAD Dakar from 2009 to 2011, MNHN Paris in 2012)
- Fluent spoken and written english

Publications

- Hladik CM, Cohen E, Pasquet P. 2014, Taste and Obesity, European Childhood Obesity Group (in press).
- Cohen E, Boëtsch G, Palstra F, Pasquet P. 2013 Social valorisation of stoutness as a determinant of obesity in the context of nutritional transition in Cameroon, *Social Science and Medicine* 96: 24-32.
- Cohen E, Pasquet P. 2011, Development of a new body image assessment scale in urban Cameroon: an anthropological approach, *Ethnicity and Disease* 21: 288-93.

Grants

- Laureate of the Nivea/CNRS prize in 2010 on « Appearance in the society » (PhD)

- National Research Council (ANR) 2008, project: “Anthropologie Nutritionnelle des migrants d’Afrique Centrale en zones urbaines et en France (ANTRAC)” (PhD) [Nutritional anthropology of migrants in urban Central Africa and France].
- Fellow of university excellence of the CROUS of Paris: “Centre Régional des oeuvres universitaires et scolaires” [Regional center for university and school work in 2006/2007 (Master 2 research)].

Patrick Pasquet



Director of Research

Eco-Anthropology and Ethnobiology unit

Office phone: (33) 1 40 79 81 61

UMR 7206, Centre National de la Recherche Scientifique

Email : ppasquet@mnhn.fr

Muséum National d’histoire Naturelle,
57 rue Cuvier, 75005 Paris-France

Education

- Habilitation à Diriger des Recherches (HDR), Biological Anthropology, Aix-Marseille University.
- PhD, Physical Anthropology, Paris 7 University
- Master Degree, Physical Anthropology, Paris 7 University

Scientific Interests

Physical Anthropology, Human Ecology, Nutrition, Nutritional adaptability

Professional Experience

- 2003-present Director of Research, Centre National de la Recherche Scientifique (CNRS), UMR 7206: Eco-Anthropology & Ethnobiology unit.
- 1998-2003 Director of Research , Centre National de la Recherche Scientifique (CNRS), UPR 2147: “Dynamics of Human Evolution” unit.
- 1984-1998 Researcher, CNRS, UMR 9935: Anthropology and Ecology of Food unit “Dynamics of Human Evolution”unit.
- 1983-1984 Research fellow, Association d’Anthropologie Appliquée (AAA), Faculté de Médecine des Saints Pères, Paris 5 University.
- 1981-1983 Research fellow, Laboratoire de Physiologie, Renault-Peugeot association.
- 1979-1980 Research fellow, Société de Biométrie Humaine

- 1976-1978 Acting Instructor, Paris 7 University, Department of Biology and Genetics

Publications

1) Articles and books: n=137, h-index: 21

- Simmen B, Darlu P, Hladik CM, Pasquet P (in press 2014). Scaling of free-ranging primate energetics with body mass predicts low energy expenditure in Homo (Physiology and Behavior).
- Cohen E, Boetsch G, Palstra FP, Pasquet P (2013). Social valorisation of stoutness as a determinant of obesity in the context of nutritional transition in Cameroon: the Bamileke case. *Social Sciences and Medicine*, 96,
- Said Mohamed R, Bernard JA, Ndzana AC, Pasquet P (2012). Is Overweight in Stunted Preschool Children in Cameroon Related to Reductions in Fat Oxidation, Resting Energy Expenditure and Physical Activity? *PLoS ONE* 7(6): e39007. doi:10.1371/journal.pone.0039007.
- Pasquet P, Monneuse MO, Frelut ML, Simmen B, Hladik CM (2007). Taste perception in massively obese and non-obese adolescents. *International Journal of Pediatric Obesity*, 2, 242-248.
- Pasquet P, Brigant L, Froment A, Koppert G.A, Bard D, de Garine I, Apfelbaum M. (1992). Massive overfeeding and energy balance in men: the Guru Walla model. *American Journal of Clinical Nutrition*, 56, 483-490.

2) Presentations: n=197, 82 invitations.

Teaching

- Master « Environnement, milieux, techniques, sociétés », Muséum National d'Histoire Naturelle, Paris :
- Master « Développement Agricole Durable », Paris XI University : Nutritional Anthropology
- Agrosup, University of Burgundy, Dijon, Master “Sciences du goût”: Nutritional Anthropology
- IHEGGAT, Reims Champagne Ardennes University: sensory anthropology
- Department of Anthropology, University of Teheran-Iran: Human Ecology.
- Master of Biological Anthropology, Cheik Anta Diop University, Dakar, Nutritional Ecology.

~ How To Use This article ~

You are **free to use, share and copy this content** by quoting this article as follow:

Hladik CM, Cohen E, Pasquet P (2015). Taste And Obesity. In M.L. Frelut (Ed.), The ECOG's eBook on Child and Adolescent Obesity. Retrieved from ebook.ecog-obesity.eu

Also make sure to **give appropriate credit** when using this content. Please visit ebook.ecog-obesity.eu/terms-use/summary/ for more information.

~ Final Word ~

Thank you for reading this article.

If you have found this article valuable, please share it with someone that will be interested in.

Also make sure to visit ebook.ecog-obesity.eu to read and download more childhood obesity-related articles.